

# Personalized Student Success

Utah School Boards Association

Stacee McIff  
September 25, 2025



# By the Numbers at Snow

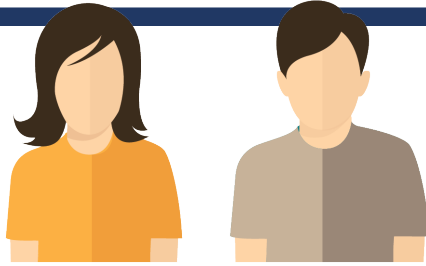


STUDENTS WHO  
START AT SNOW  
AND TRANSFER TO  
A UTAH UNIVERSITY  
GRADUATE AT A

**27%**

HIGHER RATE THAN THOSE  
WHO START AT  
THE UNIVERSITY

THIS DOES NOT COUNT ATTRITION  
OF SNOW COLLEGE STUDENTS



**52%** **48%**  
FEMALE MALE  
AVERAGE AGE IS 21

**LOWEST TUITION  
IN UTAH**

## 2026 TUITION & FEES

**\$2,219** RESIDENT

**\$7,319** NON-RESIDENT

**\$5,050** AVERAGE  
FINANCIAL AID AWARD

**\$85** PER CREDIT FOR  
TECHNICAL EDUCATION

**\$27,396**

AVERAGE SAVINGS COMPARED TO FIRST  
TWO YEARS AT UTAH'S 4-YEAR INSTITUTIONS



**K12 & Higher Ed Common goal:**

**Ensure that students have every opportunity to learn, grow, and step into adulthood as prepared citizens, family members, community builders, and leaders for Utah's future**

# Focus for Personalization

Broaden the Options

Become Friends with AI

Focus on Durable Skills  
Development



**Broaden the Options:  
Share Both Technical  
and Traditional  
Academic Pathways**

Enrollment by District

Enrollment by Institution

## HIGH SCHOOL GRADUATES

45,955

Total State Level



## ENROLLMENT RATE

41.2%

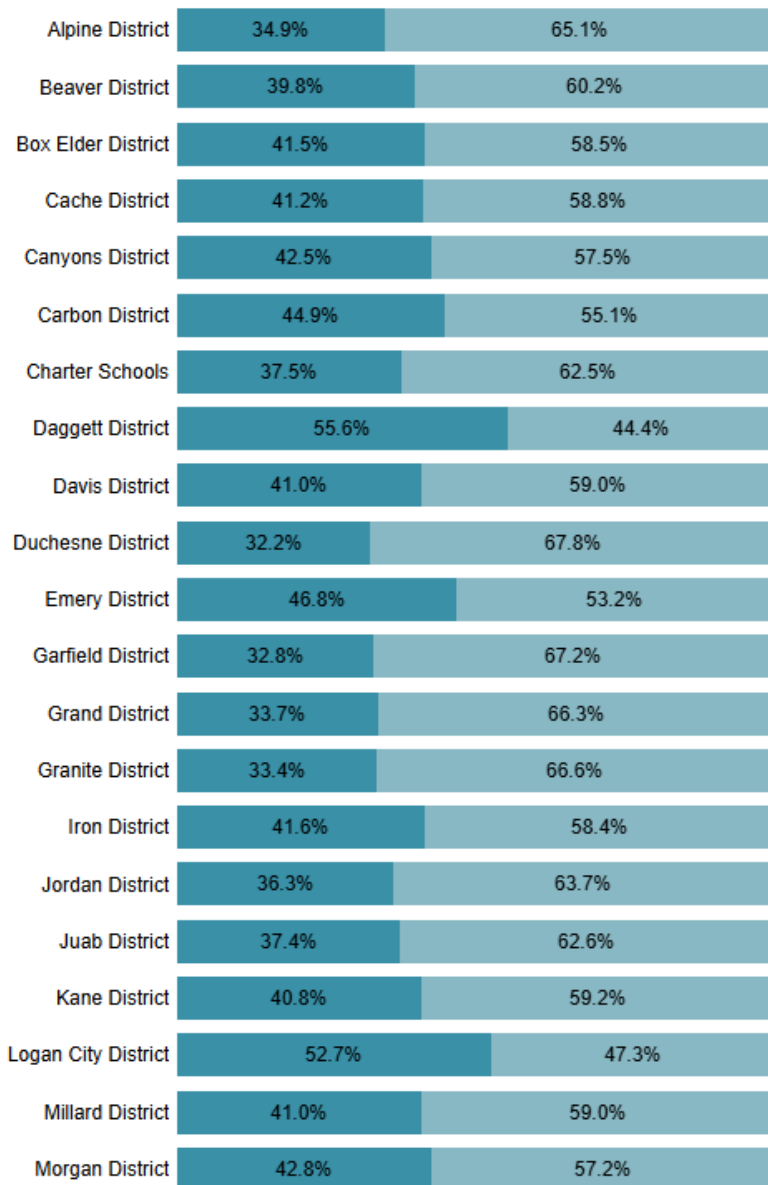
Utah high school graduates enrolled at a USHE institution within one year of graduation

## HIGHLIGHTS

- ▶ With 11 high schools, Alpine produced the greatest number of graduates, yet its proportion of first postsecondary enrollments was lower than the state average.
- ▶ Davis had the highest number of first-time postsecondary enrollments, while its proportion to graduates matched the state average.
- ▶ Tintic, Rich, and Daggett had the fewest graduates and postsecondary enrollments. However, the proportion of enrollments was near or above the state average.
- ▶ Piute had the highest proportion of college-going high school graduates followed by Daggett.

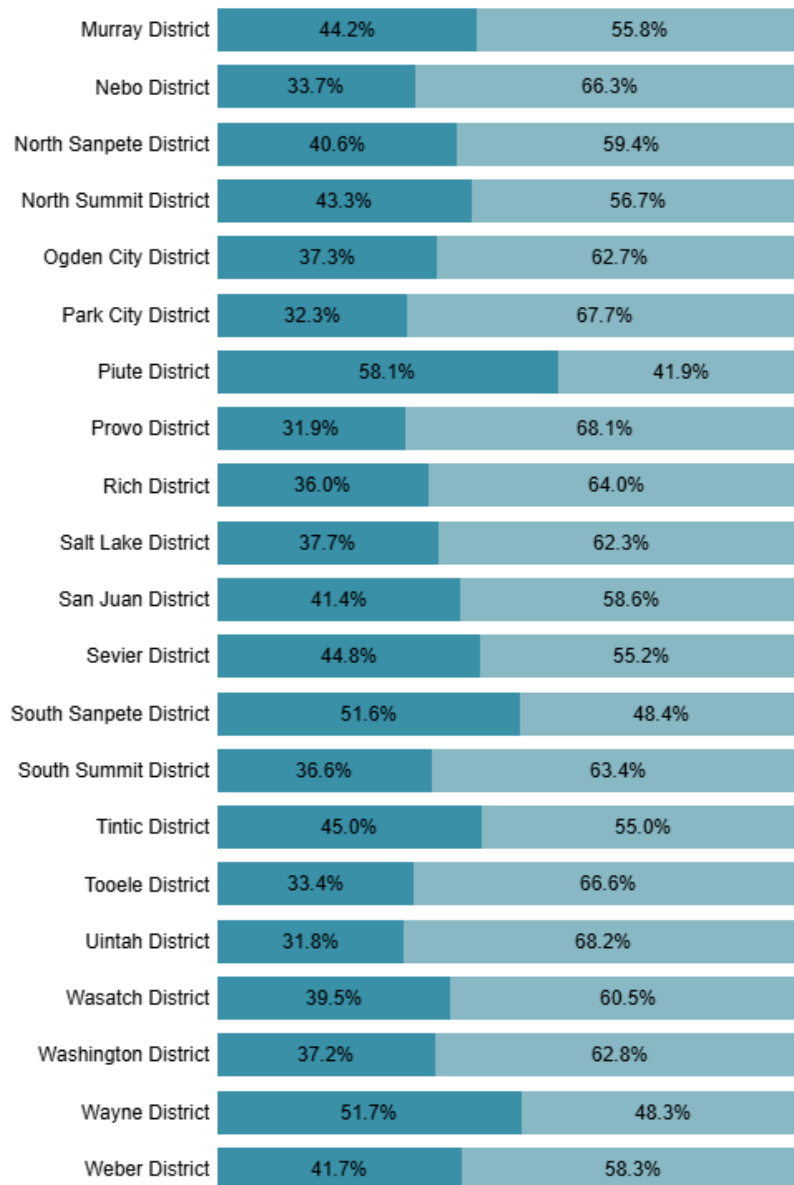
## Postsecondary Enrollment By School District

These tables show the share of Utah high school graduates by school district who enrolled at one of Utah's 16 public colleges or universities (USHE institutions) within one year of graduation. Data is suppressed when graduates are fewer than 10. Hover over the bars to see the distinct count of students.



## Enrollment Status After High School

- Enrolled at a USHE Institution
- Not Enrolled at a USHE Institution



# We are Defining "College" Too Narrowly

- Myth: College is only useful if I want to be a doctor or a teacher
- Myth: I will have to spend four years or more at college to get a meaningful credential
- Myth: College is really expensive



# Stay Connected to State/National Economy

- Student vision for pathways limited
- Gaps between students' aptitudes and interests\*
  - 12% gap Architecture and Construction
  - 24% gap Information and Technology
  - 18% gap Advanced Manufacturing
- BROADEN THE EXPOSURE OF OPTIONS

\*<https://resources.youscience.com/2025-state-of-the-future-us-workforce-report.html>



# THIS IS COLLEGE...

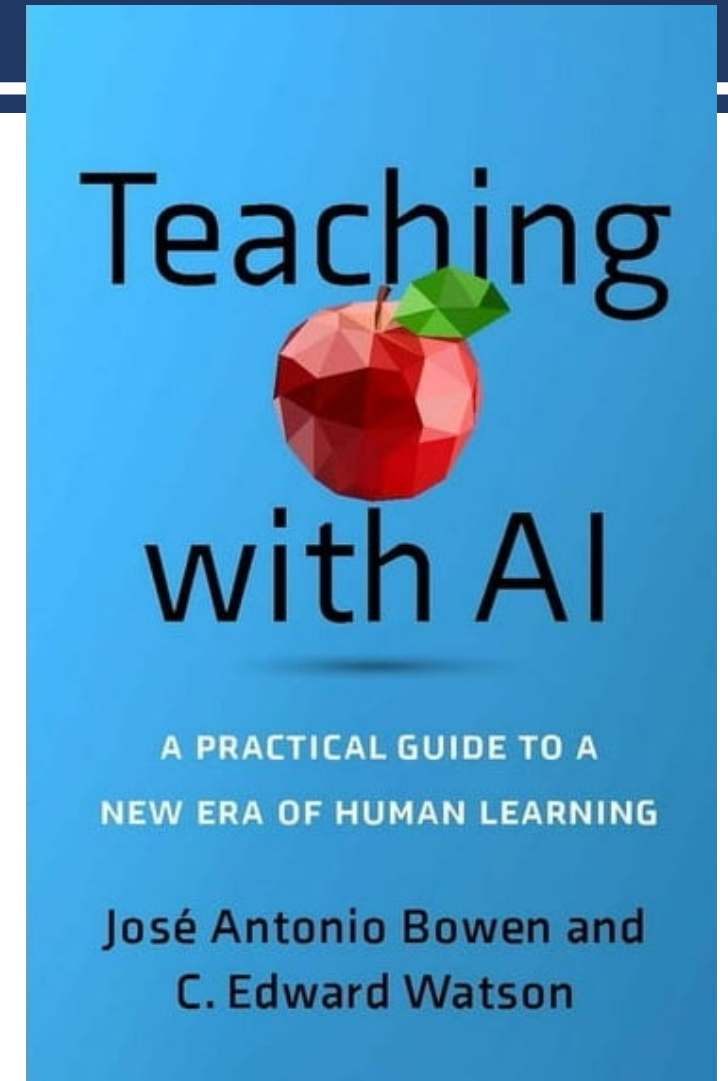




**Become Friends  
with AI**

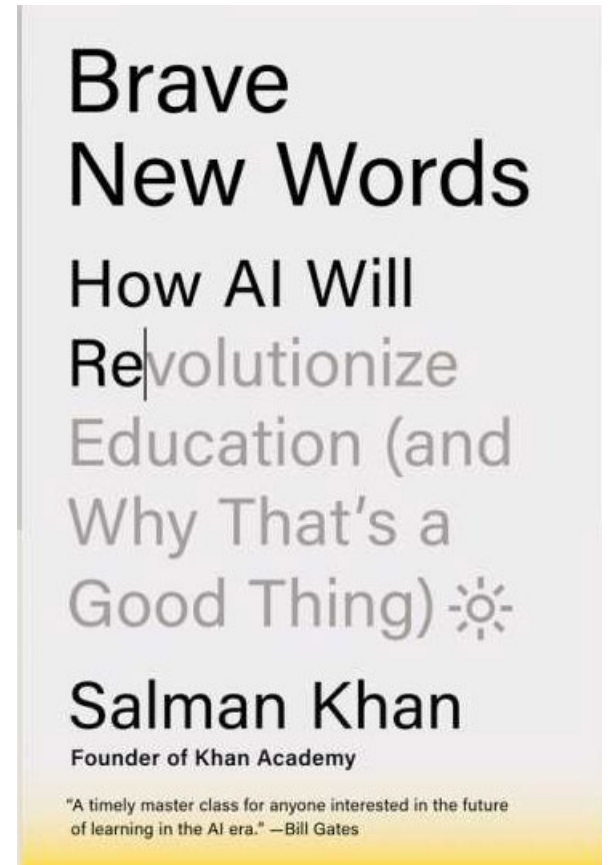
# Teaching with AI

- AI should serve as a co-pilot for teachers, not a replacement
- Instead of one-size-fits-all instruction, AI can adjust pacing, generate tailored explanations, and give instant feedback based on a student's unique needs
- Levels the playing field
- So many great examples of prompts!



# Brave New Words

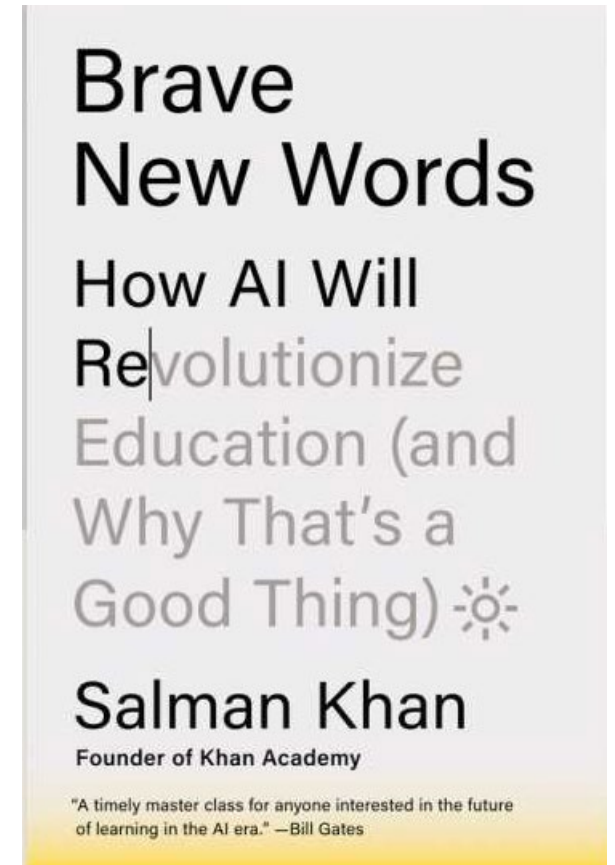
- Striking what AI can be trained to do
- Khanmigo doesn't do the thinking *for* the student — it nudges them with Socratic prompts so they reason their way through the idea
- *“The most successful students will be those who use AI to help make conceptual connections... their curiosity muscle will be strengthened”*





# Brave New Words

- Teachers who learn to leverage AI tools will be more effective
- Districts and schools that integrate AI thoughtfully will be better able to serve students and reduce staff burnout
- Students who learn to use AI ethically and productively will be the ones best positioned in the workforce of the future



# How AI Can Transform Your Organization

- Entire issue of AI-related articles
- Business and operational approach
- AI isn't about one-time transformation anymore; enables continuous reinvention — constant adaptation, constant improvement
- Need good data
- Those who wait are finding it harder to catch up



# Focus on Durable Skills Development



# Employers See Durable Skills as Lacking

- Names durable skills “significant area of opportunity”
- Say graduates are weakest in time management, stress management, and conflict resolution
- Evidence, not just degrees
- Real-world experience
- Partnerships with industry

**Cicero®**

# Cicero Recommendations

1. Build durable skills into graded class projects, presentations, and group work
2. Use advising, mentoring, and workshops to help students reflect on and strengthen their durable skills
3. Partner with employers to create internships, apprenticeships, and real-world projects that emphasize both technical and durable skills
4. Develop micro-credentials or badges that allow students to demonstrate mastery of these skills to future employers



# Adapting: Skills-based General Education

- Critical thinking pre-assessment launched this fall; exit assessment for associate grads in two years
- Faculty aligning course outcomes with durable skills
- GE program demonstrates students are developing durable skills
- Urgent amid growing marketplace, demographic, political, and economic pressures



**Broaden the Options**

**Become Friends with AI**

**Focus on Durable Skills  
Development**

**Together we...**

**Ensure that students  
have every  
opportunity to learn,  
grow, and step into  
adulthood as  
prepared citizens,  
family members,  
community builders,  
and leaders for  
Utah's future**

# Thank you!

