



**PULL UP A CHAIR:**

# **STUDENT SCHOOL BOARD MEMBERS**

**RACHEL RYU | BAILEE LINDSTROM**

# OVERVIEW



➔ **INTRODUCTION**

➔ **BENEFITS**

➔ **WHAT WE DO**

➔ **ONBOARDING PROCESS**

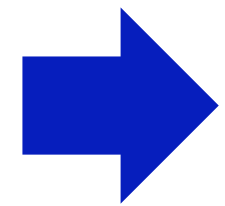
➔ **STUDENT ADVISORY  
COUNCIL**

➔ **Q&A PANEL**

➔ **COMMUNICATIONS**

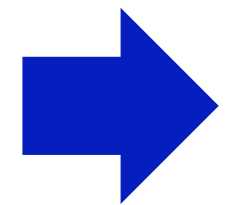
# MEET THE MEMBERS!

## RACHEL RYU



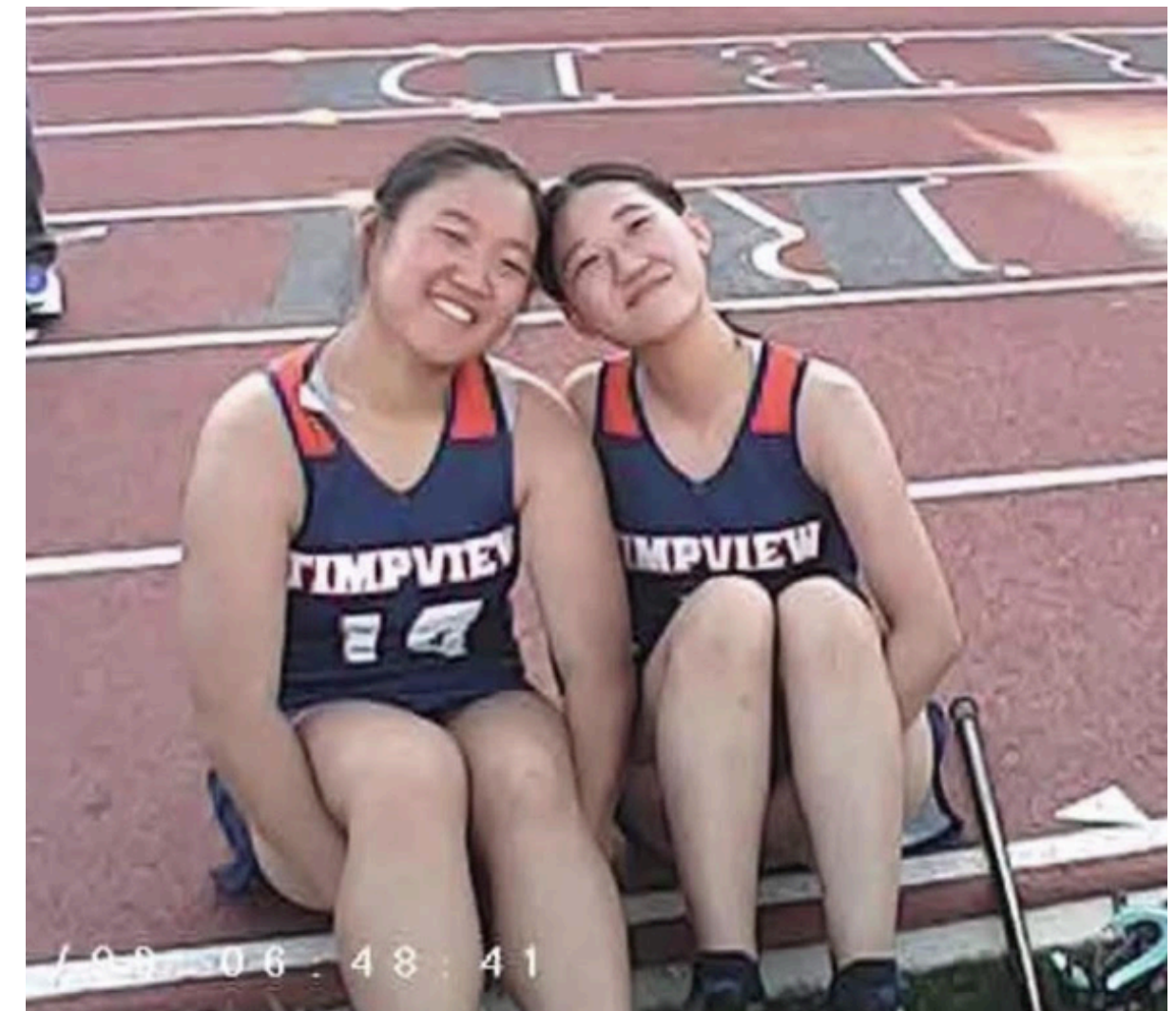
### BIO

- UTAH FCCLA VICE PRESIDENT
- INTERSHIP - PRESCHOOL
- STUDENT ADVISORY COUNCIL MEMBER LAST YEAR



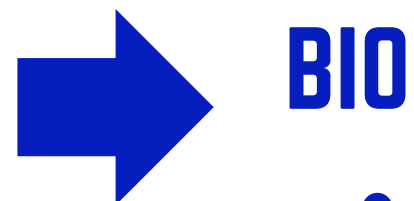
### EXTRACIRRICULARS

- GIRLS LACROSSE
- SUSHI WAITRESS
- COLLECTING WSJ NEWSPAPERS



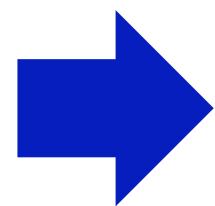
# MEET THE MEMBERS!

## BAILEE LINDSTROM



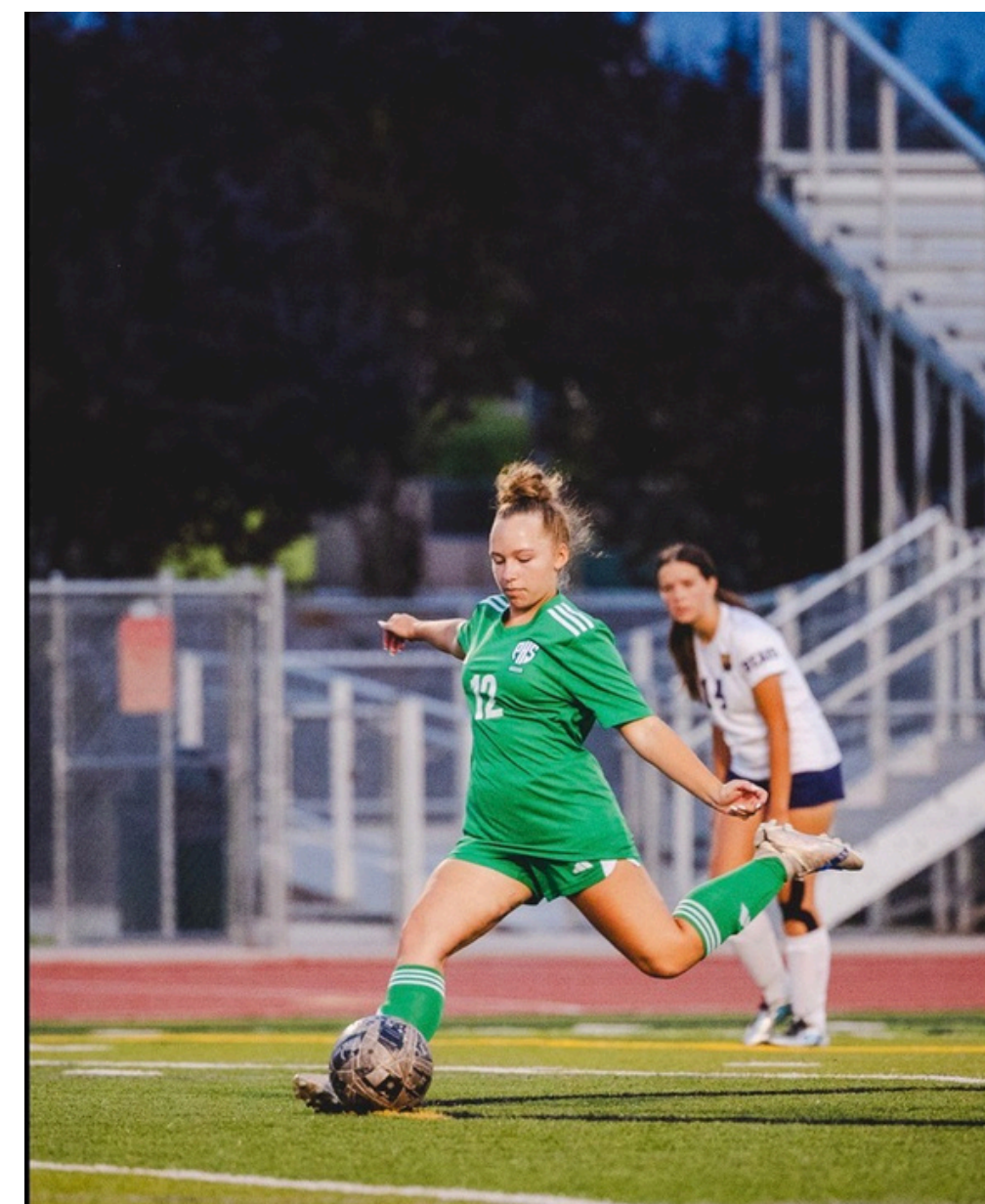
### BIO

- STUDENT GOVERNMENT
- INTERNSHIP - WESTRIDGE ELEMENTARY
- BABY BULLDOGS PRESCHOOL



### EXTRA CURRICULAR

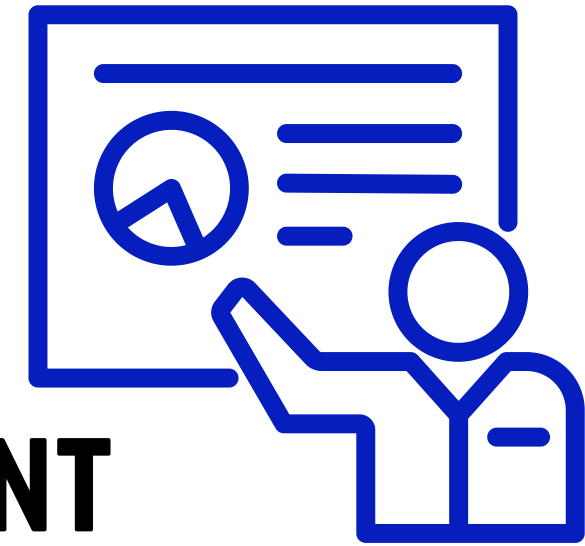
- SOCCER
- NAILS
- SERVICE FIRST CS



# WHAT WE DO

01

**PARTICIPATE IN BOARD MEETINGS**



02

**PRESENT INFORMATION FROM STUDENT  
ADVISORY COUNCIL (SAC)**

03

**REQUIRED TO JOIN 1 OF 3 COMMITTEES**



04

**POSITION IN STUDENT GOVERNMENT**

05

**PREPARE FOR THE MEETINGS**















**Monika Tua'one**  
Student Board Member - Timpview Area

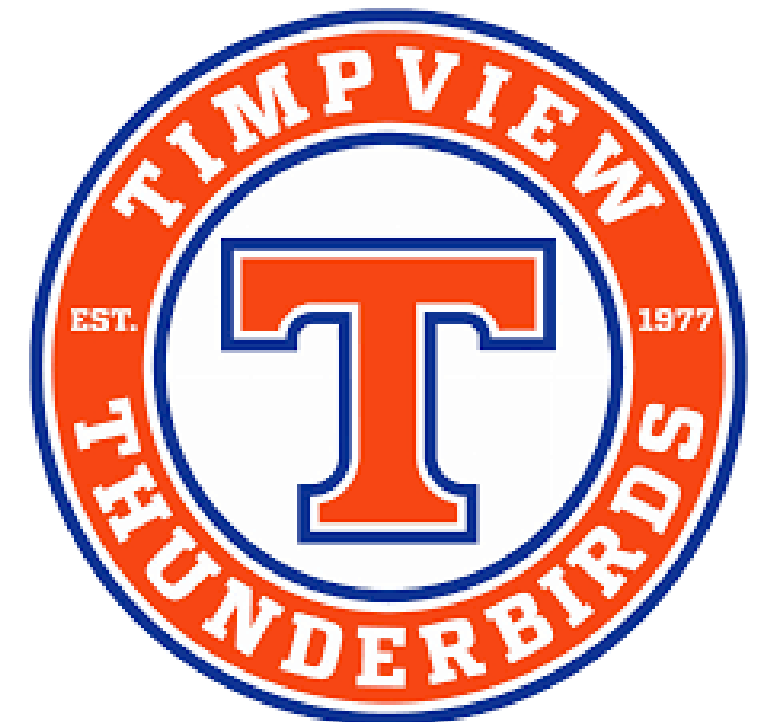
**the Student Board Members**



# STUDENT ADVISORY COUNCIL

**SAC**

- **JOINT STUDENT COMMITTEE**
- **5 MEMBERS PER SCHOOL**
  - **STUDENTS FROM A WIDE RANGE OF CLUBS, PROGRAMS, & IDENTITIES**



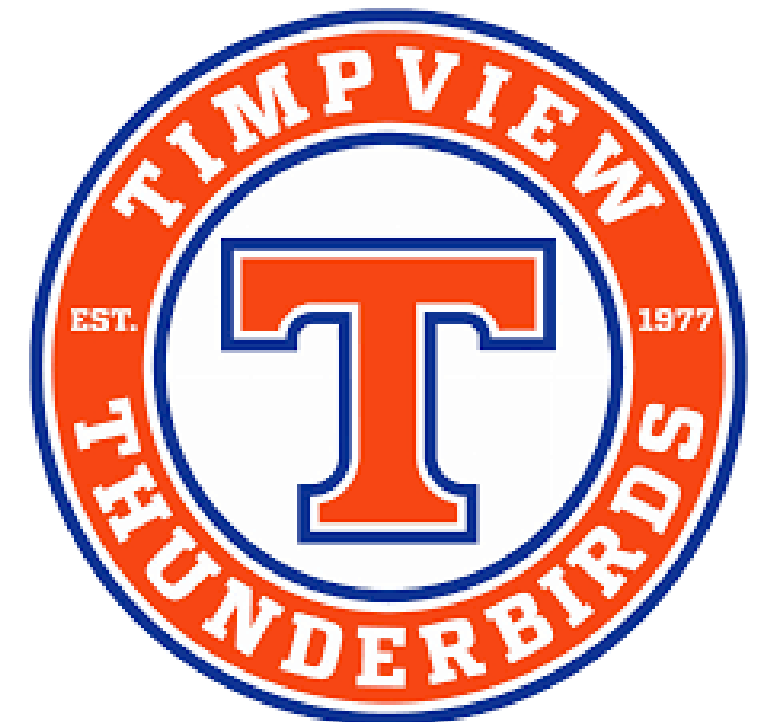




# STUDENT ADVISORY COUNCIL

SAC

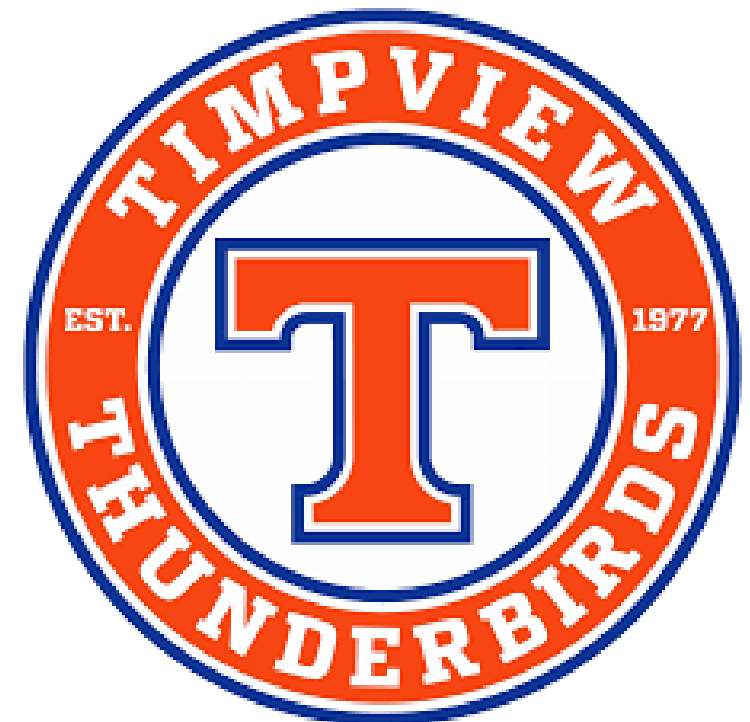
- MEET ONCE A MONTH
- PROVIDE LUNCH
- ALTERNATE LOCATIONS
  - MIDDLE SCHOOLS
- AGENDA CREATED & LED BY SBMS



# STUDENT ADVISORY COUNCIL

**SAC**

- **3 BOARD MEMBERS**
- **1 ADMINISTRATOR PER SCHOOL**
- **SUPERINTENDENT**
- **SECONDARY EDUCATION DIRECTOR-  
ASSISTANT SUPERINTENDENT**





# RECENT DICUSSION

SAC

- SCHOOL START TIME CHANGE (7:30 → 8:30)
- SAFETY IN SCHOOL DANCES
- PREPARING 8<sup>TH</sup> GRADERS
- SURVEYS FOR LUNCH PERIOD VARIATIONS
- MTECH/DUAL ENROLLMENT CONFLICTS



# COMMUNICATIONS



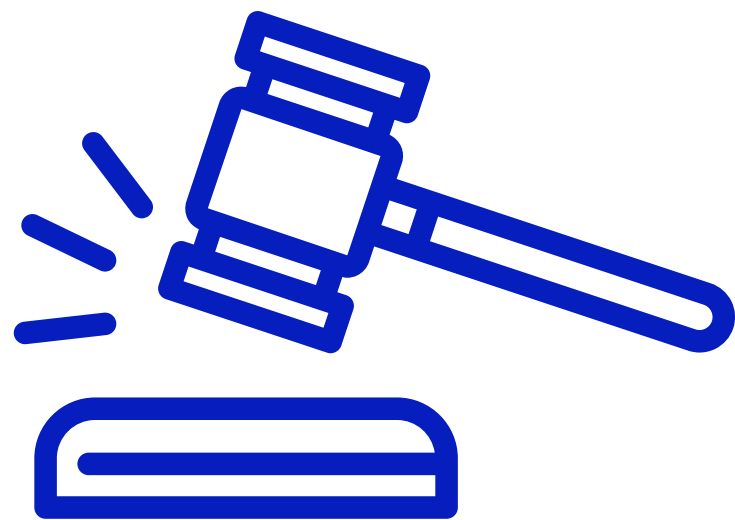
## HOW WE GET THE WORD OUT

- **DISTRICT COMMUNICATIONS TEAM**
- **INSTAGRAM**
- **STUDENT GOVERNMENT**
- **DISTRICT WEBSITE**



# BENEFITS

- **STUDENT PERSPECTIVE IN POLICIES AND ISSUES THAT DIRECTLY AFFECT STUDENTS**
- **DIRECT LINE OF COMMUNICATION BOTH TO AND FROM THE BOARD TO THE STUDENTS**
- **HELPS AVOID UNINTENTIONAL CONSEQUENCES IN POLICY**
- **BUILDS TRUST BETWEEN STUDENTS & DISTRICT LEADERSHIP**
- **NETWORKING WITH DISTRICT ADMIN AND COMMUNITY LEADERS**



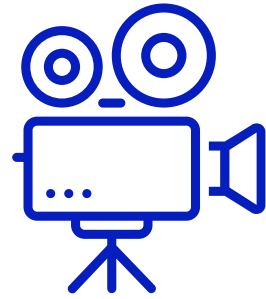


# SCHOOL BOARD MEMBERS

GINA HALES | MELANIE HALL



# SELECTION PROCESS



## ADVERTISE

VIDEO+POSTERS+TEACHERS

**TERM: JULY 1-JUNE 30**



## APPLICATIONS

DUE APRIL 1

**TRAINING: JUNE/JULY/AUG**



## INTERVIEWS

BOARD+DISTRICT+SCHOOL

**SAC SELECTION: AUG/SEPT**

Training meeting September  
1ST meeting October



## SELECTION

1 FROM EACH HIGH SCHOOL



# **REFLECTION FROM BOARD MEMBERS**

- **WE ARE HARD-CORE**
- **NEED BUY-IN FROM SUPERINTENDENT & BOARD**
- **NEED SUPPORTIVE DISTRICT ADMINISTRATOR**
- **EASIER WITH TWO BOARD MEMBERS OVERSEEING**
- **APRIL/MAY SELECTION BETTER THAN MARCH/APRIL**
- **ADDED 11TH GRADERS ON SAC**
- **EXPLICITLY INVITE STUDENTS TO MAKE COMMENTS IN BOARD MEETINGS**



# Q & A PANEL

RACHEL RYU | BAILEE LINDSTROM





**POLICIES AND PROCEDURES + RESOURCES**



**REGISTRATION FORM:**