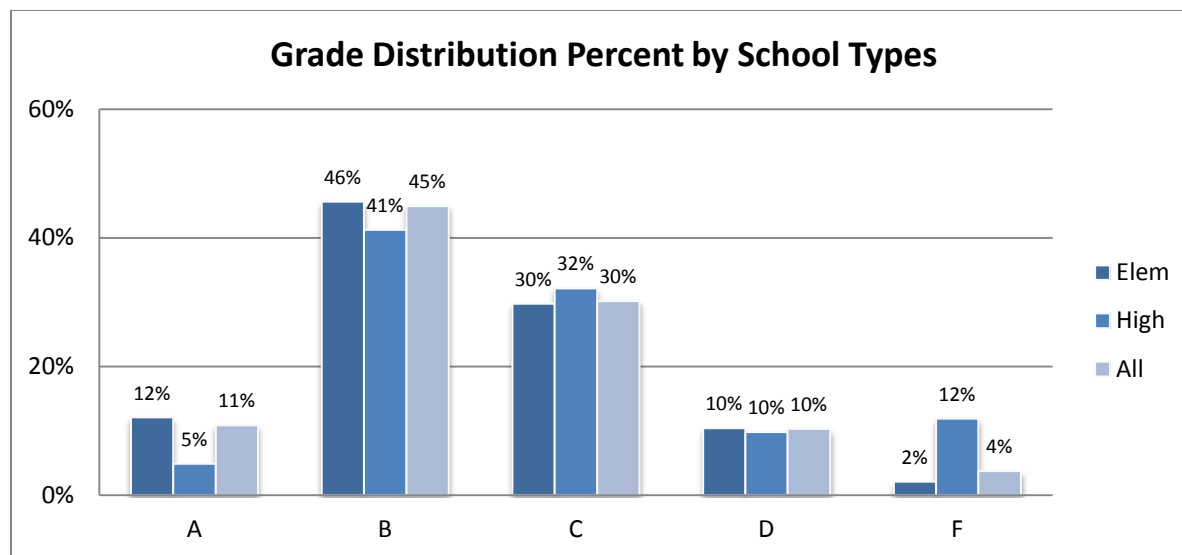


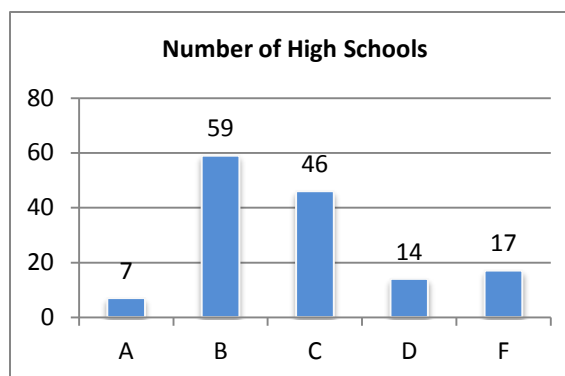
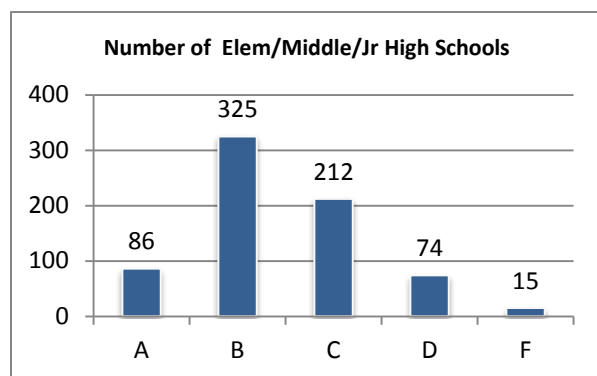


Utah Grading School Summary

Utah Grading Schools is based on two main components, students growth and student performance on statewide assessment tests. (High Schools are also evaluated on graduation rate.) The system was designed to establish a clear and easily understandable evaluation of Utah Schools by giving each school an A, B, C, D or F. Below is a summary of the Grade distribution for the school year 2012-2013.



Grade Earned	Elem/Middle/Jr. High Schools		High Schools		All Schools	
	Count	Percent	Count	Percent	Count	Percent
A	86	12%	7	5%	93	11%
B	325	46%	59	41%	384	45%
C	212	30%	46	32%	258	30%
D	74	10%	14	10%	88	10%
F	15	2%	17	12%	32	4%
Total	712		143		855	

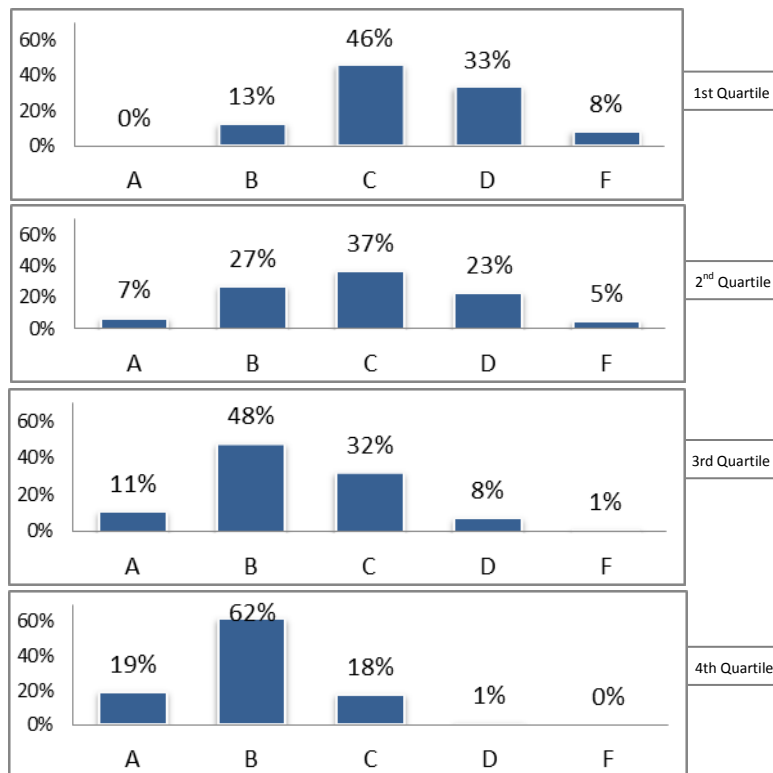




UTAH STATE OFFICE OF EDUCATION

The graphs below show the percentage of grades distributed by Utah's low income status quartile. The 1st quartile consists of schools in the state with the largest concentration of students from low income families while the 4th quartile has the smallest concentration of students from low income families.

Elem/Middle/Jr High Schools

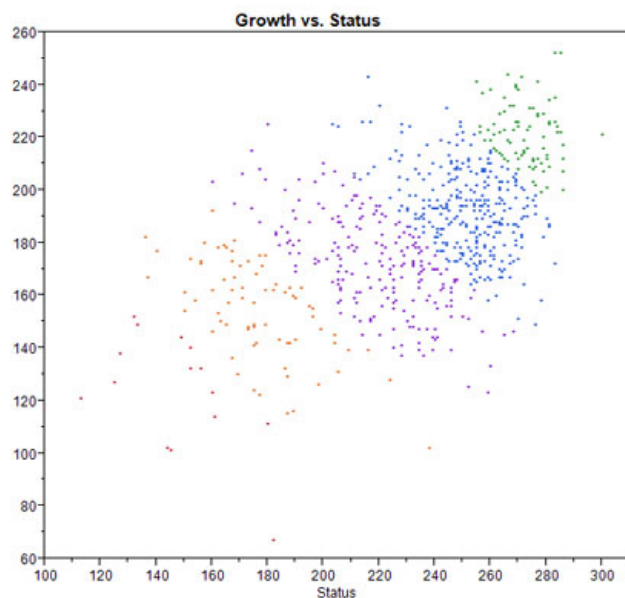


High Schools



The two scatter plots below illustrate the relationship between growth and status (achievement) scores.

Elem/Middle/Jr High Schools



High Schools

