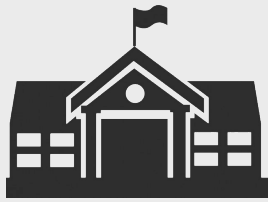




Located at the  
base of Mt. Nebo in  
**Nephi, Utah.**

District Communities  
Nephi | Levan  
Mona | Rocky Ridge



Juab High Wasps  
Juab Junior Wasps  
Mona Elementary Mustangs  
Red Cliffs Elementary Eagles  
Nebo View Elementary Knights

Founded in  
**1899**

**500+**  
Employees

**2750**  
Enrollment

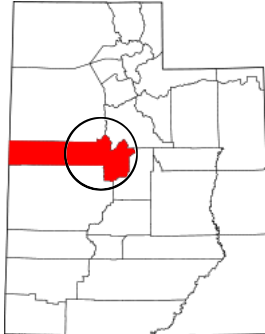
Student to teacher ratio  
**1:25**



**97%**  
Graduation Rate

District operating budget  
**\$21 million**

# Superintendent Search



Juab School District seeks a dynamic leader to acquire the position of superintendent. JuabSD is recognized as a national leader in personalized learning, characterized by a competency-referenced education model. The superintendent is the chief instructional officer who oversees the day to day administration duties throughout the district. The superintendent also works under the direction of the JuabSD Board of Education to develop effective relationships, governance, vision, policy, and fiscal strategies. The superintendent must demonstrate effective vision, communication, collaboration, and leadership skills.

Qualified applicants should:

- Demonstrate a proven record of leadership at high levels
- Demonstrate excellent communication and writing skill
- Possess strong interpersonal relationship skills with all stakeholders
- Ability to demonstrate and articulate instructional leadership with an emphasis on personalized learning
- Have an understanding of the following:
  - the Utah education system and contemporary challenges impacting education on a local, state, and national level
  - basic Utah school finance and sound fiscal policy
  - instructional technology and impact on personalized learning in a competency education model

All applications will include the following:

- ✓ Letter of interest
- ✓ Resume
- ✓ District employment application
- ✓ A writing sample
- ✓ Unofficial transcripts
- ✓ 4 Letters of reference

**Please submit an application to**

**Juab School District**

Attn: Kristin Tischner

346 East 600 North

Nephi, Utah 84648

[kristin.tischner@juabsd.org](mailto:kristin.tischner@juabsd.org)

435-623-1940

## Application Timeline

Announcement of opening	April 15, 2020
Advertisement with USBA	April 15, 2020
Position closed	May 7, 2020, 5:00 p.m.
Screening	May 11-12, 2020
Interviews	May 18, 2020
Announcement of superintendent	May 21, 2020
Contract begins	July 1, 2020



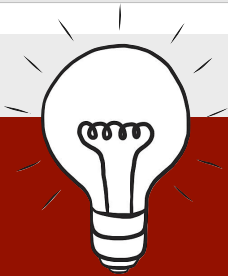
[www.instagram.com/juabsd\\_official](https://www.instagram.com/juabsd_official)



<https://twitter.com/juabsd>



[www.facebook.com/juabsd](https://www.facebook.com/juabsd)



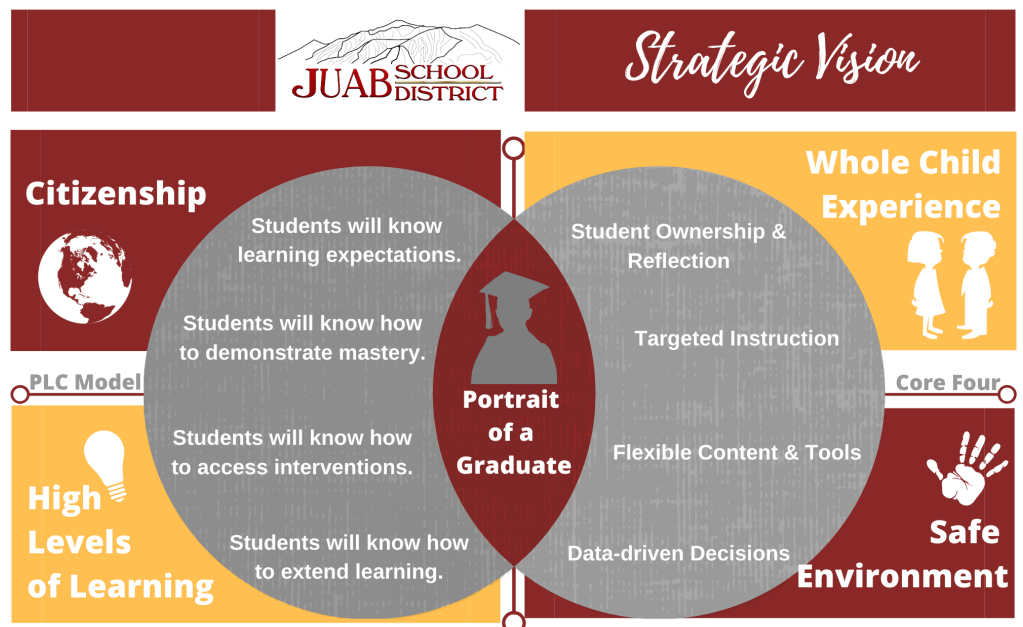
Member of the  
Digital Promise  
League of  
Innovative  
Schools

## District Overview

Juab School District is located in beautiful east Juab County in the shadow of Mount Nebo. Juab County provides a vast array of outdoor recreation opportunities and is close in vicinity to more urban activities in Utah and Salt Lake Counties. Salt Lake International Airport is an hour drive. Juab County is one of the fastest growing areas in population in the state of Utah. JuabSD is growing at a 4-6% increase annually.

A big reason for this growth is the opportunity for children to attend school in Juab School District! Our district is known as a national leader in providing students a world class personalized learning experience based on positive relationships with all stakeholders. JuabSD's forward thinking approach was recognized in 2015. The district was awarded entry into the prestigious Digital

Visit [bit.ly/juabpog](http://bit.ly/juabpog) to learn more about our Portrait of a Graduate or to view an interactive version of our vision.



[www.juabsd.org](http://www.juabsd.org) | 435-623-1940 | #jsdinnovates | #juablearns